

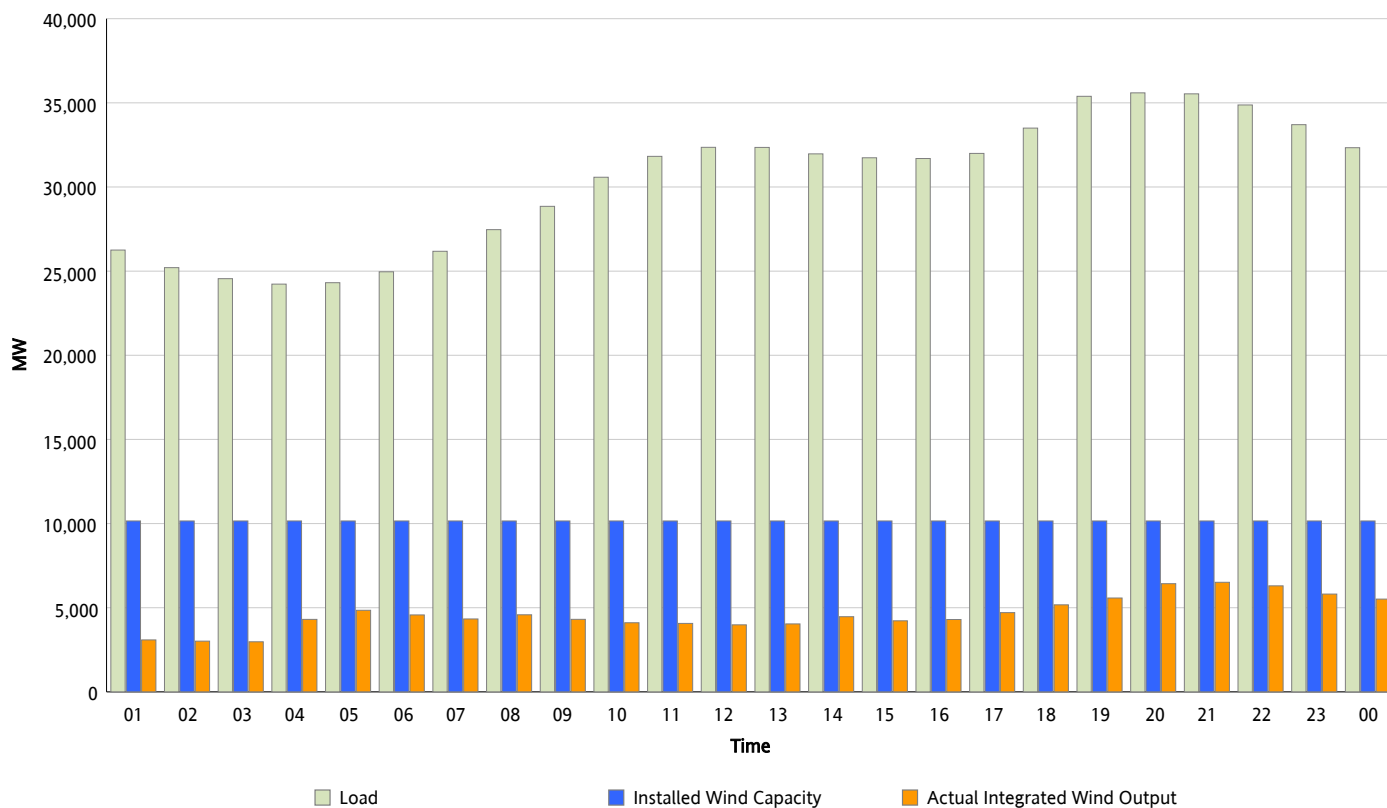


ERCOT Grid Operations

Wind Integration Report : 01/12/2013

Peak Load	35,594 MW
Load Peak Hour (HE)	20
Wind Over Peak	6,428 MW
Wind Record 12/25/12	8,638 MW
Max Wind Value*	6,719 MW
Wind Peak Time	19:35
Wind Integration %	18.92 %

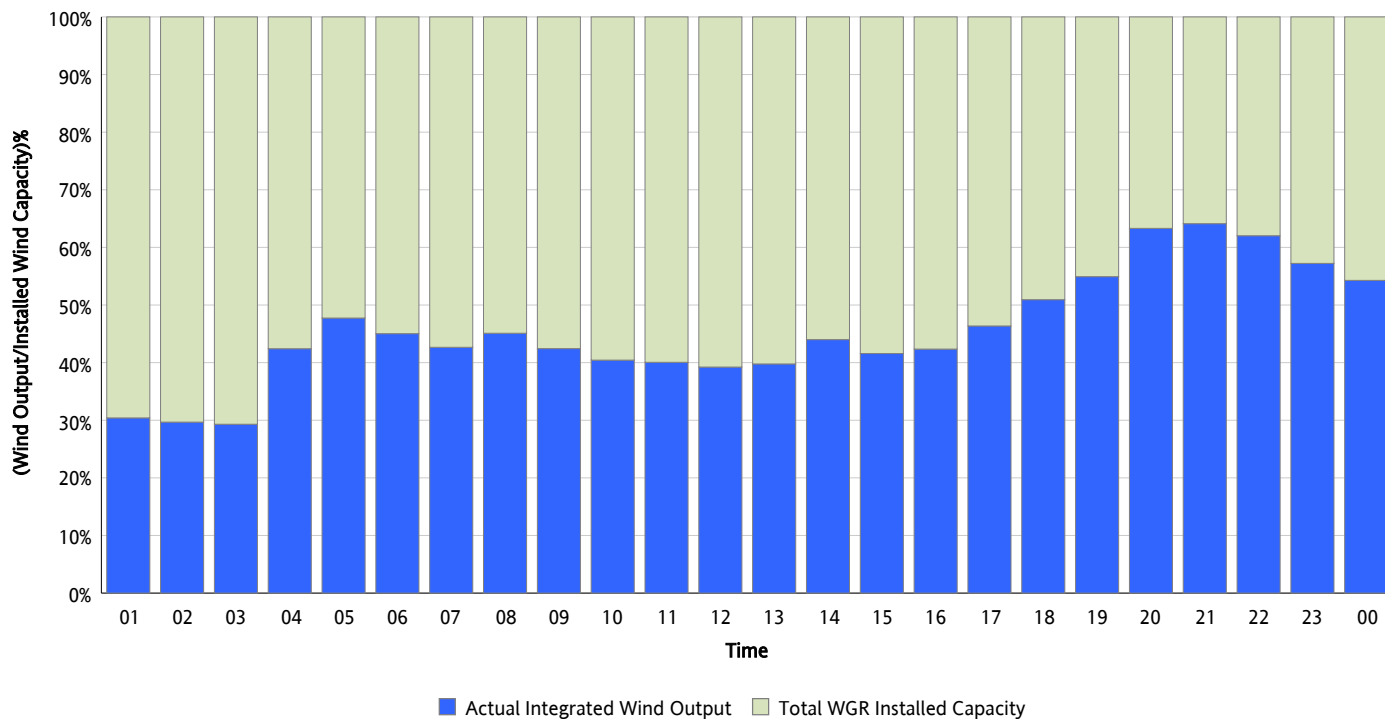
Hourly Average Actual Load vs. Actual Wind Output
01/12/2013



** Wind Record and Wind Max represent instantaneous values and the rest of the values are integrated over the hour*

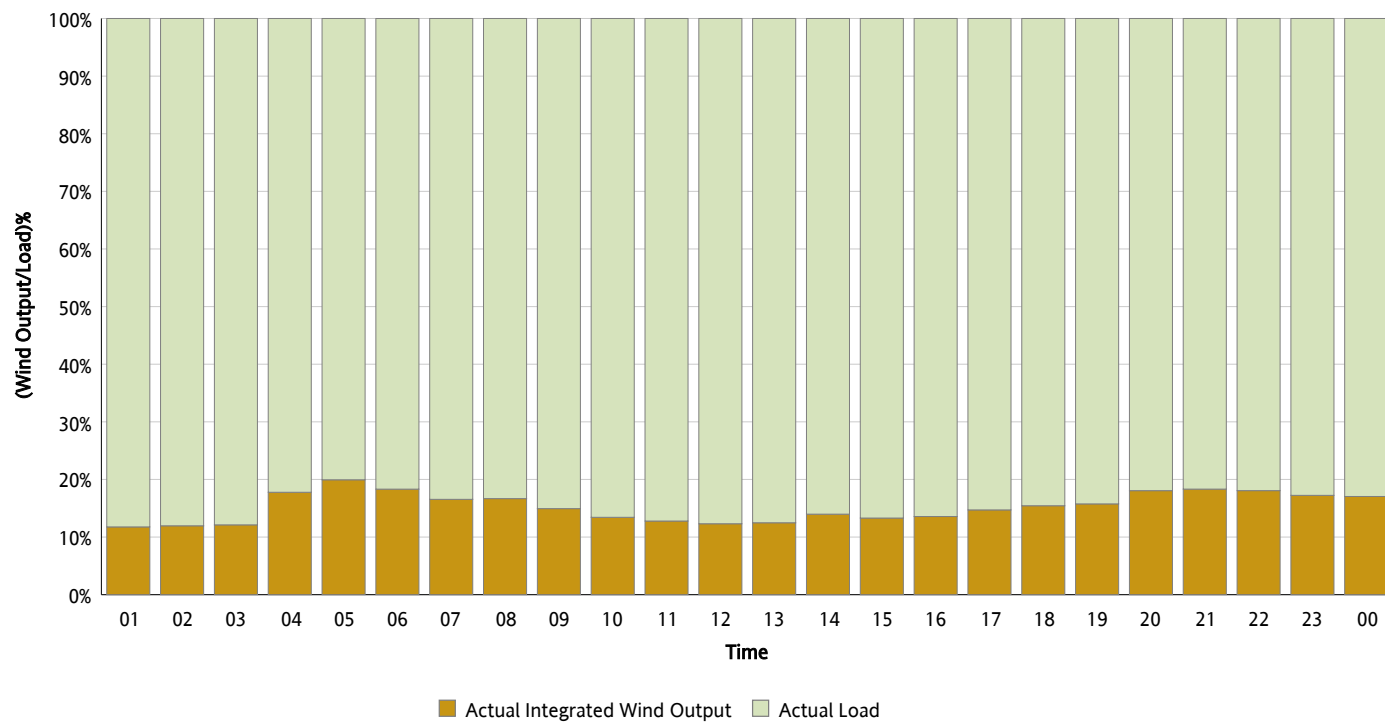
Actual Wind Output as a Percentage of the Total Installed Wind Capacity

01/12/2013



Actual Wind Output as a Percentage of the ERCOT Load

01/12/2013



ERCOT Load vs. Actual Wind Output

01/05/2013 - 01/12/2013

